



Morgan Crescent, Epping, CM16

BUTLER & STAG



Sold Off Market within 24 Hours !!

A chance to acquire this simply stunning semi-detached, five bedroom family house in a premier location, offering easy access into the heart of Theydon Bois village restaurants, shops and transport links.



Freehold

- Semi Detached Family Home
- Fully Fitted Modern Kitchen/Dining Room
- South Facing Garden
- Five Bedrooms/Three Bathrooms
- Spacious Lounge
- Downstairs Playroom/Study

The accommodation is spaciouly arranged over three floors spanning close to 2370 sq ft, The ground floor offers a formal spacious living area, a modern kitchen/dining room which opens on to the well presented garden. A utility room, study/ playroom and guest cloakroom complete the ground floor.

The second floor you will find four bedrooms and a family bathroom with the biggest bedroom having the luxury of an en-suite. The third floor is where the master with en-suite is situated with loads of eaves storage.

Externally, the South facing rear garden extends in excess of 70' with the initial part decked offering a welcome alfresco dining area upon entering the garden, the remainder is a flat and usable lawn. The front garden has a block paved driveway offering parking for two/three vehicles.

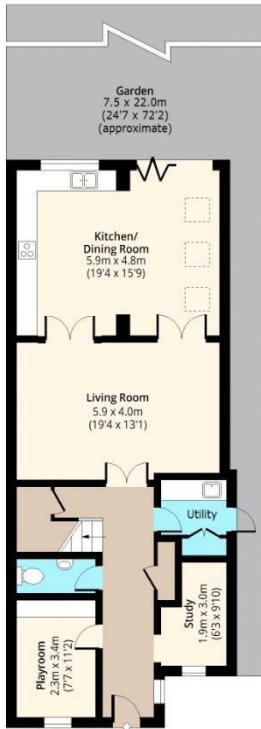
Theydon Bois is a charming village with a traditional green and duck pond, well regarded primary school, a range of shops, pubs and restaurants, cricket, tennis and golf clubs. Transport links to London are excellent with the central line tube station within just over ten minutes? walk and easy access to the M25 and M11.





Morgan Crescent, CM16

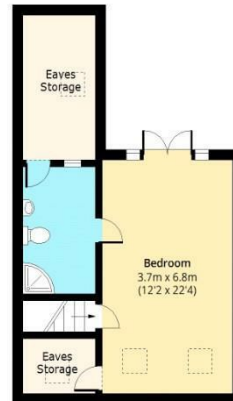
Ground Floor
Approx. 92.06 Sq. meters (991 Sq. feet)



First Floor
Approx. 77.85 Sq. meters (838 Sq. feet)



Second Floor
Approx. 50.26 Sq. meters (541 Sq. feet)



Total area: approx. 220.17 Sq. meters (2370 Sq. feet) (Including Eaves Storage)
For illustration purposes only - not to scale
www.paplus.com

BUTLER & STAG

☎ 01992 667666

🏠 4 Forest Drive, Theydon Bois, Essex, CM16 7EY

✉ theydon@butlerandstag.com

IMPORTANT NOTICE - These particulars have been prepared in good faith and they are not intended to constitute part of an offer or contract. We have not performed a structural survey on this property and the services, appliances and specific fittings have not been tested. All photographs, measurements, floor plans and distances referred to are given as a guide and should not be relied upon.

www.butlerandstag.uk